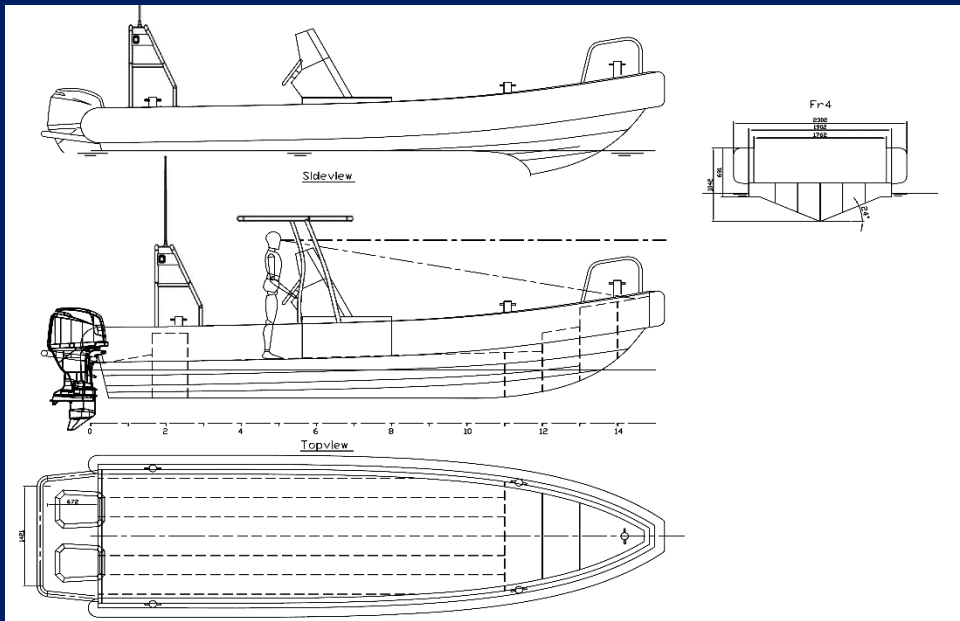


M/V MATRIX

VESSEL SPECIFICATION

8.0 m MCA Class 3 shallow water support craft



Built	2015, The Netherlands
Trading area	Worldwide
Complement total	6 pax + crew
Classification	MCA CAT 3 20 miles
Dimensions	Length overall 8.0m, Beam 2.3m, Draft trim up 0.6m trim down 1.0m
Main Engine	2x Yamaha F115 Hp
Bowthruster	High manoeuvrability side power 40 kg
Hull	Aluminium
Net tonnage	1.9 t
Speed	Maximum 48 Knots Cruising 25 – 27 Knots
Bollard pull	900 Kg
Tank Capacities	Patrol 250 litres
Navigation aids	1x DSC VHF radios, Magnetic compas, Electronic chart, Class B AIS, Email and internet access, Speedlog, echosounder
Seating & Storage	Individual seating for 2 crew , storage for equipment
Equipment	Medical first aid, Search light, Various deck lights, Pyro technics
Launching options	Crane or Slip
Transport options	Road transportable, Container 40 ft High Cube
Lifting points	4x 1.5 t lifting points

She is available for dive operations / support, Survey work, ROV operations, crew transfers, can be used as a filing platform and more...